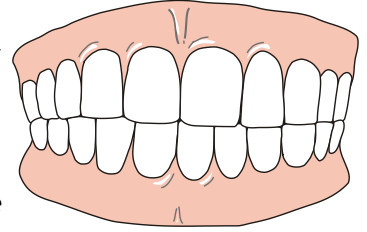


## WORDS

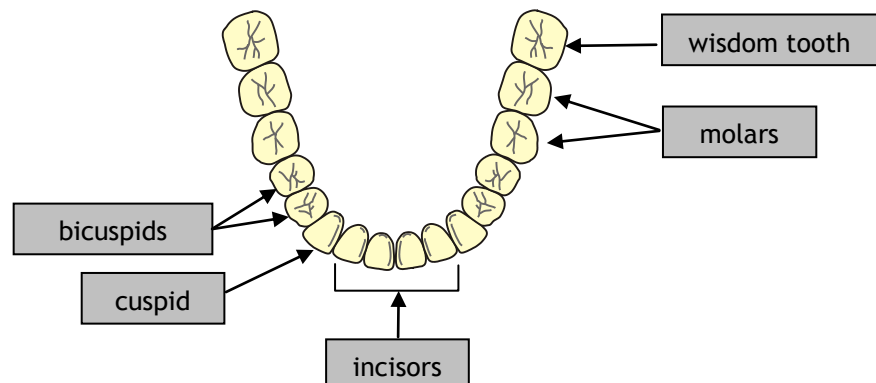
- **although** = while
- **bicuspid** = a tooth that has two points
- **bony** = parts of the body that are made up mostly of bones
- **canine tooth** = one of the four sharp pointed teeth in the front of your mouth, also called cuspid
- **cause** = to make something happen
- **chew** = to bite food many times before you swallow it
- **chop** = cut up
- **crunch** = crush
- **grind** = to break into small pieces
- **in all** = all together
- **incisor** = one of the eight flat teeth in the front part of your mouth
- **instead of** = in something's place
- **jawbone** = one of your bones that your teeth are in
- **loose** = not in place
- **molar** = one of the large teeth at the back of your mouth used for breaking up food
- **permanent** = things that you keep, something that you have forever
- **pointy** = very sharp
- **remove** = to take something away
- **replace** = to take the place of
- **ridge** = something that is higher than the area around it
- **set** = group
- **skin** = the outer part of something
- **space** = room
- **straight** = in the right position, in a line
- **swallow** = to make food go down your throat
- **tear** = rip
- **unlike** = not like
- **wider** = broader, not narrow
- **wisdom tooth** = one of the four teeth at the back of your mouth that do not grow until you are an adult
- **wise** = clever, intelligent

Teeth are hard, **bony** structures that grow from the **jawbone**. Humans and other animals use their teeth to bite and **chew** food.

**Unlike** your brain, your teeth were not ready to work from the day you were born. **Although** babies start growing their first teeth before they are born, you can't see them until they are about 6 to 12 months old.



Humans grow two **sets** of teeth during their lives. The first set has 20 teeth baby teeth. When a child is about 6 years old, these teeth become **loose** and fall out. Over the next few years 28 **permanent** teeth **replace** the baby teeth. When a person is around 20, four more back teeth, called **wisdom teeth** grow in. Many people have their **wisdom teeth removed**, so that the others have more **space** to grow **straight**.



We have different types of teeth in our mouth. Each one has a different function. The four front teeth are called **incisors**. They are very sharp and are used for cutting and **chopping** food. You use your **incisors**, for example, to **crunch** the **skin** of an apple.

The **pointy** teeth beside them are **canine** teeth or cuspids. There are four of them, two on top and two on bottom. They help **tear** and **grind** food. Teeth with two points are called **bicuspids**; you have eight of them **in all**, four on the top and four on the bottom. You need to open your mouth a bit **wider** to see them. They are bigger and stronger and have **ridges** that make them perfect for **crushing** and **grinding** food.

We have eight back teeth, called **molars**. They are even **wider** and stronger than **bicuspids** and have more **ridges**. The tongue brings the food to your **molars** where it is **crunched** and then **swallowed**. **Wisdom teeth** are the last teeth way back in the corner of the mouth. They aren't used for anything and are often **removed** because they can **cause** problems in a person's mouth. They are called **wisdom teeth** because they come later on in life when a young person is older and "**wiser**".

**WORDS**

- **bodyguard** = something or someone that protects you from danger
- **brain** = the organ inside your head that controls how you feel, think and move
- **cavity** = hole
- **connect** = link
- **contain** = to have in it
- **cover** = here: reach, get to
- **crown** = part of the tooth that you can see
- **damage** = harm, destroy
- **decay** = if something is slowly damaged or destroyed
- **dental floss** = a strong string that you use for cleaning between your teeth
- **enamel** = the hard, smooth outer surface of your teeth
- **especially** = above all, very
- **fluoride** = a chemical which can help teeth stay healthy
- **glue** = sticky
- **gum** = the places of pink flesh at the top and bottom of your mouth where your teeth are in
- **heat** = warmth, high temperature
- **jawbone** = one of your bones that your teeth are in
- **pain** = ache, hurt
- **plaque** = a harmful material that can form on your teeth, which bacteria can live on
- **prevent** = to stop something from happening
- **protect** = guard
- **regular** = here: often
- **remove** = to go away
- **root** = part of a tooth that connects it to the rest of your body
- **shiny** = smooth and bright
- **space** = room
- **stuck** = here: to stay in a place so that it is difficult to remove it
- **substance** = material
- **surface** = the top layer of something
- **tissue** = the material that forms cells
- **toothpaste** = the white cream that you use to brush your teeth

**PARTS OF A TOOTH**

The part of the tooth that you can see is called the **crown**. The outer part of it is covered with a hard white material called enamel which **protects** the tooth. It is often hard and **shiny** and acts as a tooth's **bodyguard**. It **protects** the inside parts of the tooth. Below it is dentin, a yellow bonelike material that is softer than the outer part. Dentin makes up the largest part of the tooth.

The centre of the tooth is called pulp. It is soft and **contains** blood and nerves. When you eat hot soup, bite into cold ice cream, fall or hurt a tooth it's your pulp that hurts. Nerves in your teeth send signals to the **brain** about **heat**, cold or **pain**. The pulp also keeps the tooth alive.

The soft **tissue** around the base of each tooth is called **gum**. The **roots** of the teeth are below the gums. A tooth can have between one and three **roots**. A **glue-like substance** called cementum keeps the teeth **connected** to the **jawbone**.



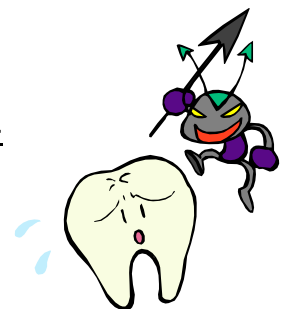
One of the biggest problems with teeth is tooth **decay**. Bacteria forms in the teeth and eats away tooth enamel. This leads to a **cavity** or hole in your teeth. It may cause **pain** and infection. Dentists fill holes with metal or plastic to **prevent** any **damage**. **Plaque** can also make **gums** red and weak. As time goes on **gums** can become so soft and weak that teeth can fall out. That's why we should brush our teeth **regularly** and go to the dentist at least twice a year to **prevent** these problems.

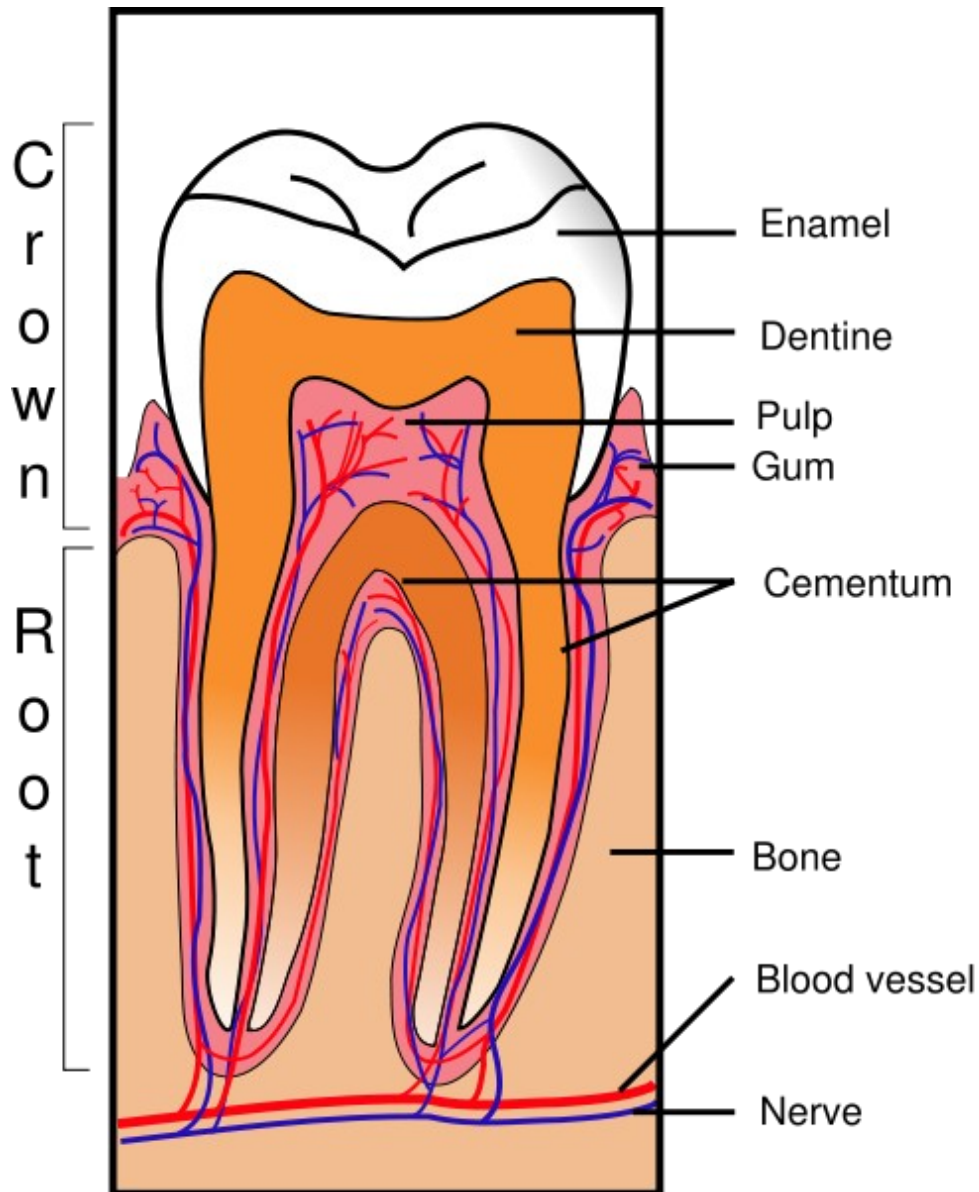
**HOW TO TREAT YOUR TEETH**

Try to brush your teeth with **fluoride toothpaste** at least twice a day. It's **especially** important to brush before you go to bed.

The best way to brush is to move in little circles, go around until you have **covered** every **surface** of every tooth. You should clean the **space** between your teeth with a **string** called **dental floss** at least once a day. It **removes** food and **plaque** that get **stuck** between them.

You can also **prevent** problems by eating fewer sugary snacks and drinks that **contain** sugar. Sugar can hurt your teeth and cause tooth **decay** or **cavities**.





### WORDS

- **enamel** = the hard, smooth outer surface of your teeth
- **dentine** = the type of bone that your teeth are made of
- **pulp** = part of the inside of a tooth
- **gum** = the pink area in your mouth in which your teeth are fixed
- **cementum** = a material that covers the root of a tooth
- **bone** = hard part of your tooth
- **blood vessel** = one of the tubes through which your blood flows
- **nerve** = small thin lines in your body that carry messages between the brain and other body parts